

FIELD STAIN A-B KIT

(STAINING OF BLOOD CELLS AND HEMOPARASITES)

BIO LAB
DIAGNOSTICS
ISO 9001:2015
ISO 13485:2016
CE

PRINCIPLE

Polychromated Methylene Blue and Eosin stains selectively basophilic and acidophilic cellular elements to demonstrate blood cells and hemoparasites.

REAGENTS COMPOSITION

- 1. FIELD STAIN A** **500 mL**
Buffer, methylene blue 0.5% & preservative.
- 2. FIELD STAIN B** **500 mL**
Buffer, Eosin (water soluble) 0.4% & preservative.
- 3. EASYFIX** **50 mL**
(Peripheral smear spray fixative)

Working Reagent Preparation

All Reagents are ready to use.

STORAGE AND STABILITY

All reagents are stable at room temperature until the expiry date stated on each label. Do not spray Easy fix to open fire. Avoid inhaling the spray.

SAMPLE

Peripheral blood samples on clean glass slides may be collected. If Anticoagulated blood to be preferred use K₃ EDTA. Avoid Heparin as anticoagulant. Make smear immediately after blood collection.

LIMITATIONS

Result of Field stain is interfered by pH variation. Contamination of detergent, Alkali and Acids alter the staining results.

Staining time may be increased or decreased according to requirement. Poor staining may be observed if stain A & B is contaminated with each other or diluted.

Excessive time may over stain the slide. Each batch of stain should be controlled for optimum staining time.

BIBLIOGRAPHY

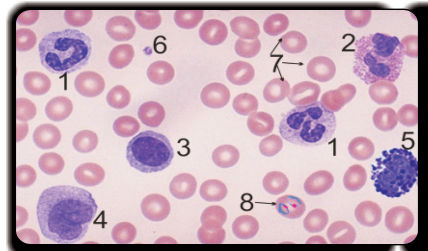
1. Mac. Neal, J. A. M.Med. Assoc. 78,1112 (1922).
2. Biological Stain 9th Ed. The Williams & Wilkins Co. Balti more, MD 1977 P. 424.
3. J.Med Res. 7,138 (1902).
4. "Histopathological technic and pract histochem The Blackston Co., New York, N.Y. 1954.

PROCEDURE (OPTIONAL*)

- a) Fill up two coplin jars or wide mouth bottles One with Field Stain A (Blue stain) and Second with Field Stain B (Red stain).
- b) Make blood smear on clean glass slide and dry at air.
- c) Spray 'Easyfix' fixative on smears and dry at air.
- d) Dip fixed smear to Field Stain B (Red Stain) for 5 - 6 seconds. Wash in running tap water.
- e) Dip smear into Field Stain A (Blue Stain) for 35-40 seconds. Wash in running tap water. Dry at air and see under oil immersion objective. (Optimum staining time may be found out by staining few control smears).

* Above suggested staining times may be altered according to each laboratories optimization.

RESULTS



- 1) Neutrophil :**
Segmented polymorph with purple granules.
- 2) Eosinophil :**
Polymorph with large orange granules.
- 3) Lymphocyte :**
Dark blue nuclei with clear blue cytoplasm.
- 4) Monocyte :**
Kidney shaped nucleus with smoky blue cytoplasm.
- 5) Basophil :**
Polymorph with large blue granules.
- 6) Platelet :** Small pale bluish cells.
- 7) Red Blood Cells :** Pinkish Red Cells.
- 8) Malaria Parasites :** Pale bluish with Red Schifner's Dot (Trophozoit).

BIO LAB DIAGNOSTICS (I) PVT. LTD.

J-245, MIDC, TARAPUR, BOISAR - 401 501, MAHARASHTRA.

E-mail : biolab@vsnl.com / www.biolabdiagnostics.com

Customer Care : (+ 9122) 28088243